

ROOSEVELT ESTATES REPLAT OF BLOCK 11
SECTION 16, TOWNSHIP 43 SOUTH, RANGE 43 EAST, CITY OF WEST PALM BEACH, PALM BEACH COUNTY, FLORIDA

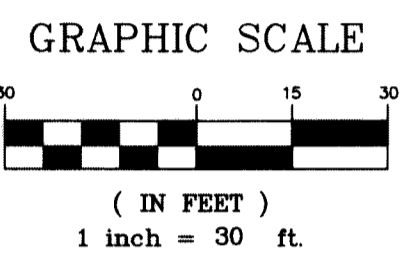
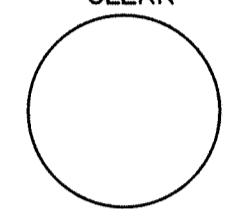
149

STATE OF FLORIDA
COUNTY OF PALM BEACH
THIS PLAT WAS FILED FOR
RECORD AT _____ M.
THIS _____ DAY OF _____
A.D. 2020 AND DULY RECORDED
IN PLAT BOOK _____ ON
PAGES _____ THROUGH _____

SHARON R. BOCK
CLERK AND COMPTROLLER

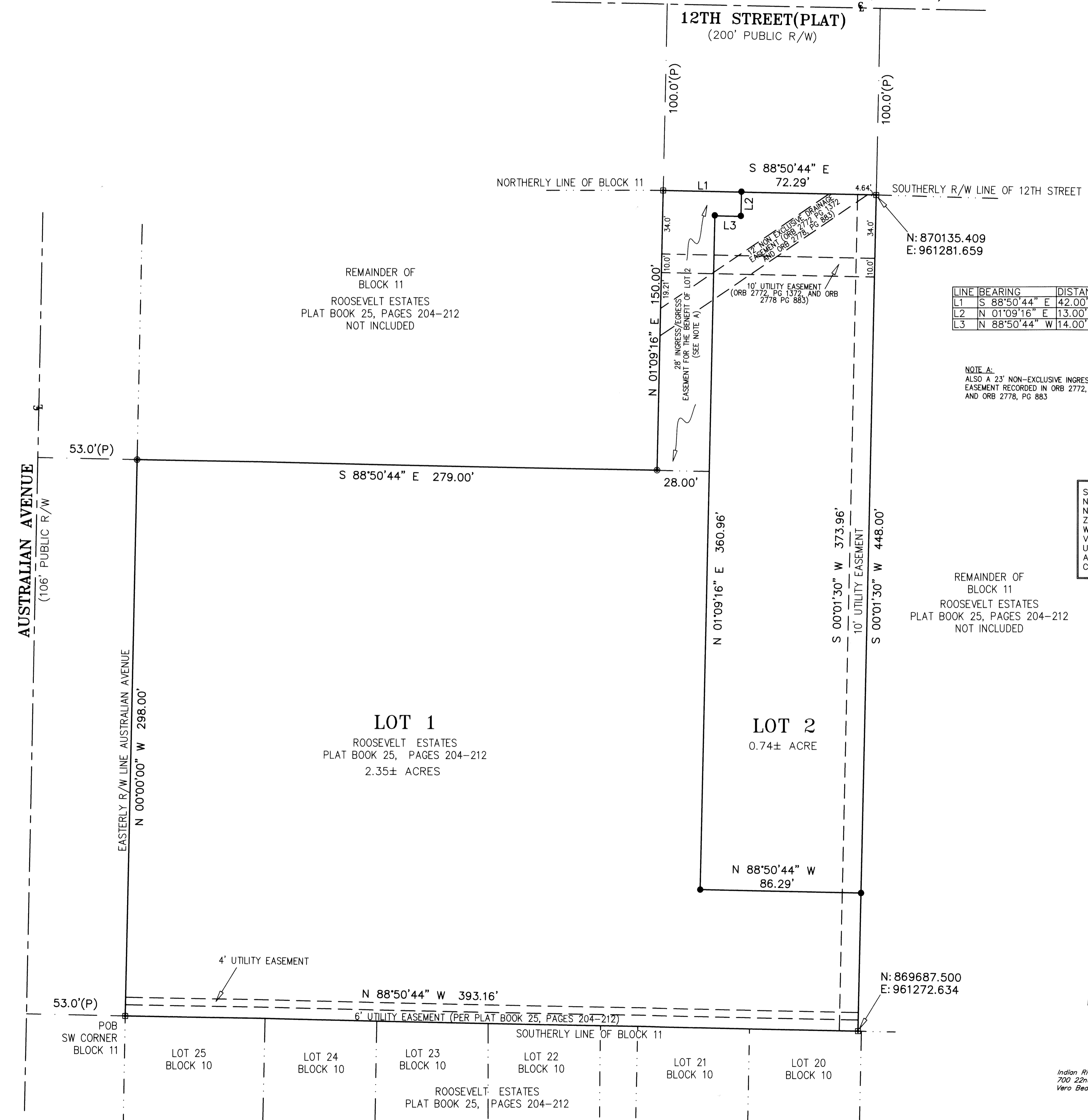
BY: _____
DEPUTY CLERK

SHEET 2 OF 2
CLERK



PALM BEACH LAKES BOULEVARD (POSTED)

12TH STREET (PLAT)
(200' PUBLIC R/W)



LINE	BEARING	DISTANCE
L1	S 88°50'44" E	42.00'
L2	N 01°09'16" E	13.00'
L3	N 88°50'44" W	14.00'

NOTE A:
ALSO A 23' NON-EXCLUSIVE INGRESS/EGRESS
EASEMENT RECORDED IN ORB 2772, PG 1372
AND ORB 2778, PG 883

STATE PLANE COORDINATES ARE BASED UPON
NATIONAL GEODETIC SURVEY CONTROL POINT
NUMBER DG8782 FLORIDA STATE PLANE EAST
ZONE NAD 83 2011. STATE PLANE COORDINATES
WERE DERIVED BY CLOSED STATIC NETWORK.
VECTOR LINES AND RAW DATA WAS PROCESSED
USING PROGRAM HECTOR TO VECTOR. NETWORK
ACCURACY AFTER PROCESSING ACHIEVED A 95%
CONFIDENCE LEVEL.

LEGEND

- NGS = NATIONAL GEODETIC SURVEY
- (P) = PLAT (D) = DEED (M) = MEASURE
- R/W = RIGHT OF WAY
- ORB=OFFICIAL RECORD BOOK
- PG=PAGE
- PRM = PERMANENT REFERENCE MONUMENT
- POB = POINT OF BEGINNING
- ⊕ = CENTERLINE
- = 4"x4" CONCRETE MONUMENT WITH BRASS DISK MSD PRM LB 8078
- = SET PK NAIL WITH BRASS DISK MSD PRM LB 8078
- = SET 1/2" IRON WITH WITH YELLOW CAP MSD 8078

REMAINDER OF
BLOCK 11
ROOSEVELT ESTATES
PLAT BOOK 25, PAGES 204-212
NOT INCLUDED

REMAINDER OF
BLOCK 11
ROOSEVELT ESTATES
PLAT BOOK 25, PAGES 204-212
NOT INCLUDED

LOT 1
ROOSEVELT ESTATES
PLAT BOOK 25, PAGES 204-212
2.35± ACRES

LOT 2
0.74± ACRE

**Mills, Short, Drum
& Associates**
Land Surveying & Mapping

Indian River Office (Principal): 700 22nd Place, Suite 2C & 2D Vero Beach, Florida 32960
Brevard Office: 4620 Lipscomb Street, NE, STE. 2 Palm Bay, Florida 32909

PHONE: (321) 914-3978